



Healthcare

# Supporting essential industries



rs-online.com

By your side

# Supporting our customers



## High stock levels

£300m of inventory readily available



## Next day delivery

We use a national carrier network to maintain continuity of service



## Order online 24/7

We are here when you need us, with up-to-date inventory levels



## Product Plus sourcing

Whatever you need however obscure – we can get it



## RS Local

We offer a contactless click & collect service, plus custom order services for kitting and consolidated delivery



## Best in class eCommerce experience

Our RS PurchasingManager® web order management tool & eProcurement solutions can help streamline ordering processes

# Protecting our people



## People First

Home working wherever possible. In the workplace - managed cells, social distancing, enhanced PPE requirements

**By your side**

# Product Support

At RS we are ready and prepared to support your business.  
**By your side.**

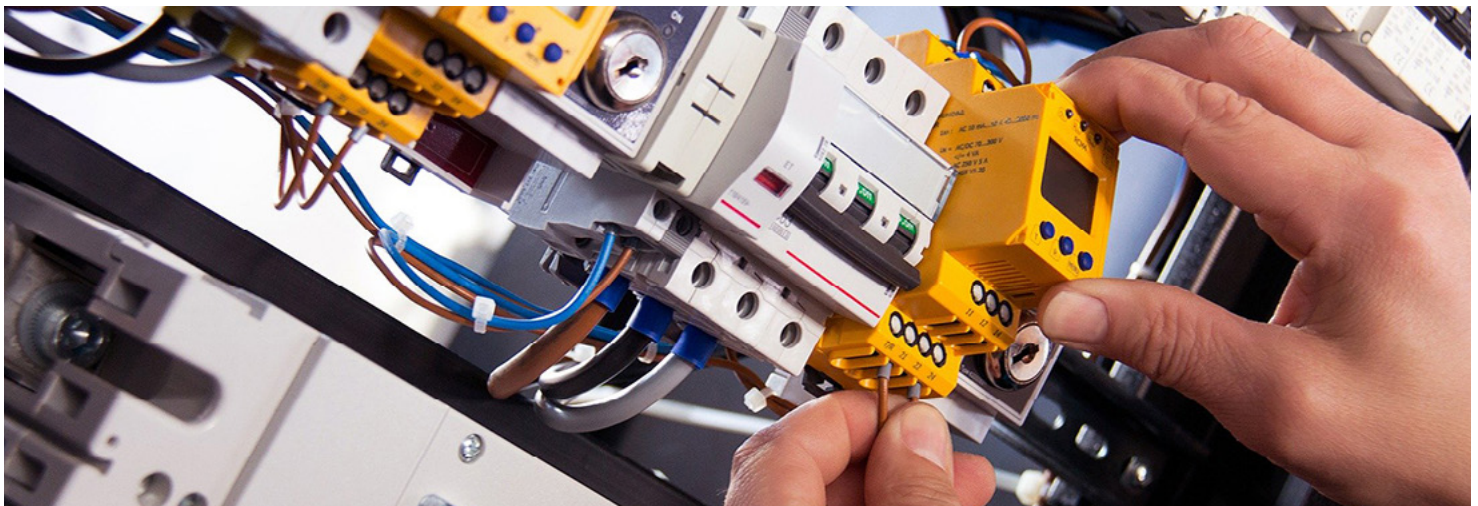
## Safety, security, ESD & clean room



From Personal Protective Equipment (PPE) to site safety and security estate managers need access to gloves, eye protection, safety boots, barriers and signage to keep their sites running.



## Cable & wires & connectors



Maintaining large sites requires a significant amount of electrical cable, such as flexible mains cable, conduit cable, ethernet & telecoms cable and even tri-rated cable. Additionally there will be a regular requirement for mains plugs, industrial connectors, junction boxes and more.



**HellermannTyton** *Thomas&Betts*



## Batteries & chargers

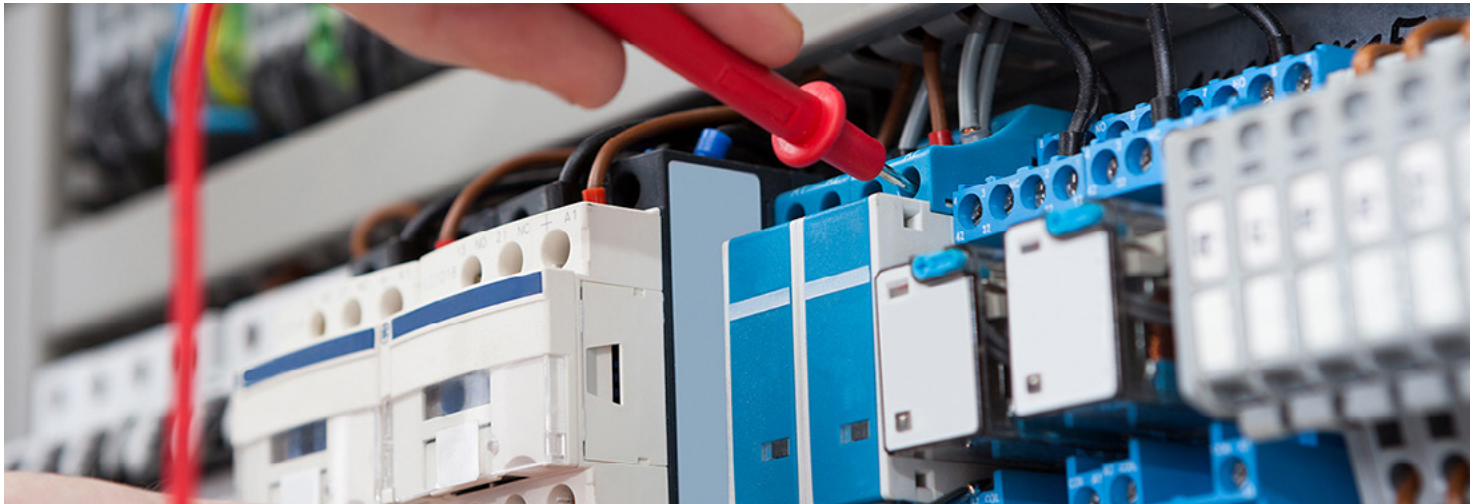


With lots of portable equipment in use across the wards and theatres, as well as by the maintenance and support teams, the need for batteries and chargers is high.



**Panasonic** **DURACELL®**  **YUASA**

## Test & measurement



The estates teams will be doing general electrical maintenance as well as some environmental monitoring to ensure power, lighting, temperature and general air quality are all maintained - this requires multimeters, electrical installation testers, thermometers and air quality and light meters.



## Tools



With a focus on building and site maintenance the estates team will need electrical tools, carpentry tools, and general power tools to keep the site running smoothly.



*StanleyBlack&Decker*



## Lighting



With so many large buildings, illuminated 24/7, often quite old and using mixed lighting there is an on-going need for lamps, fittings, luminaires and emergency exit signage.



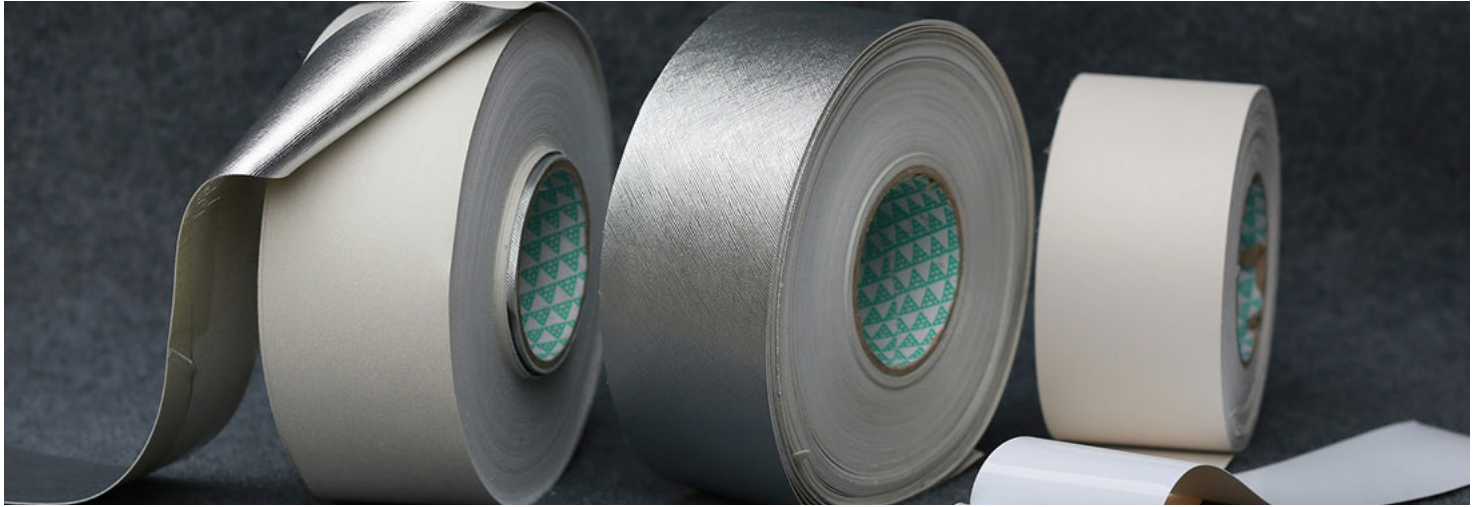
**OSRAM**

**PHILIPS**

**Schneider**  
Electric



## Adhesives, sealants & tapes



Vital for everyday building and site maintenance; from glues & sealants to tapes & fillers the estate management and maintenance team will be using these daily.

**3M**

**RS  
PRO**

**LOCTITE**

**tesa**

**ADVANCE**



For more information please contact  
your RS Account Manager

**By your side**

**RS**